

In Partnership with OPSRC

## 1 Choose your favorite video

Browse teacher-created content

OR

Search our Edpuzzle Originals library

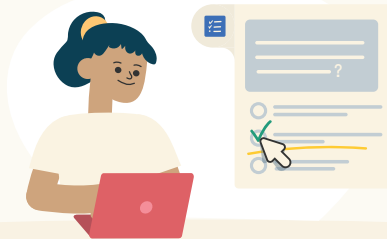
OR

Screen record your own video



## 2 Embed questions anywhere

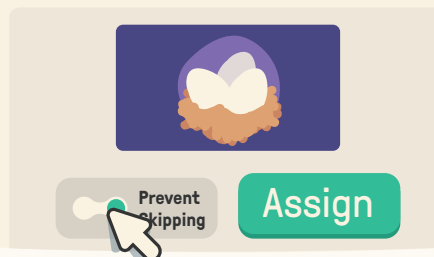
Promote critical thinking



Check comprehension

## 3 Assign your video lesson

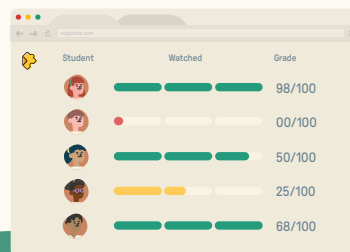
Hold students accountable for watching



Let students learn at their own pace

## 4 Track students' progress


See which students are struggling



Decide how to best support students in class

Ready to make your first video lesson?

Go to [edpuzzle.com](https://edpuzzle.com) and sign up today!



## Who uses Edpuzzle?

More than **500K schools** worldwide, with more than **+30M interactive video lessons**.

## Does it integrate with any LMS?

Edpuzzle integrates with Google **Classroom**, Microsoft **Teams**, Canvas, Moodle, Schoology, and more.

## Is Edpuzzle safe for my students?

Our safety measures are very strict, complying with the **GDPR** and using the **Standard Contractual Clauses ("SCC")** approved by the European Commission.

## Can all the schools in my group be connected in Edpuzzle?

Of course, we call it the Edpuzzle Network.

Ready to create  
your first video  
lesson?

### Just do the following:

- Contact us [marcia@edpuzzle.com](mailto:marcia@edpuzzle.com)
- Participate in one of our trainings

In Partnership with OPSRC